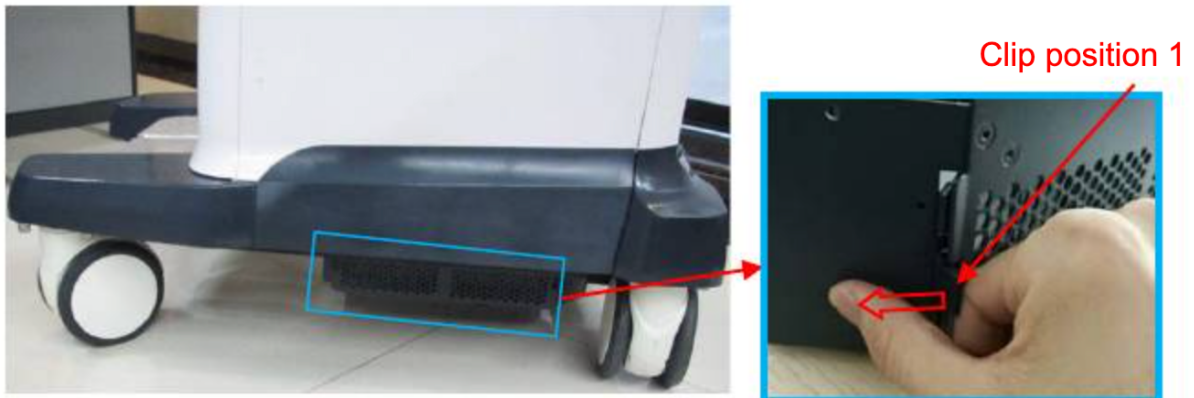


Maintenance Instructions – Dust Filters

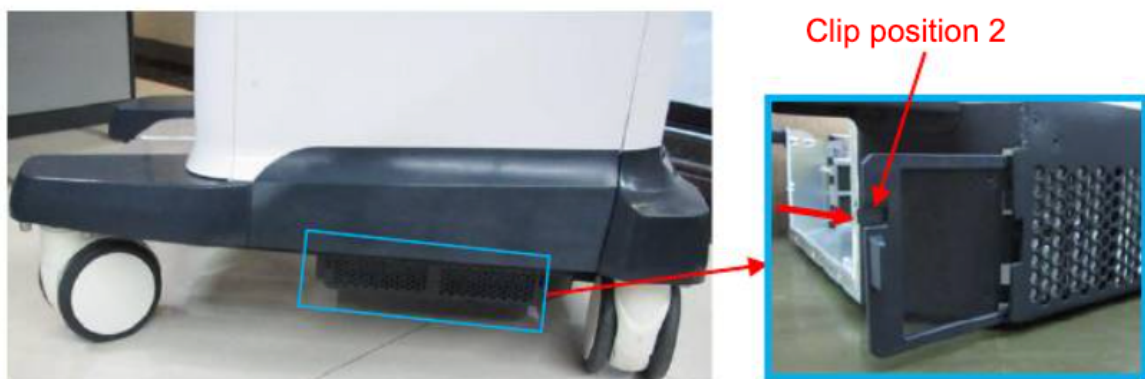
⚠️ WARNING: Before cleaning the system, be sure to turn off the power and disconnect the power cord from the outlet. If you clean the system while the power is "On", it may result in electric shock.

Procedure

1. Dustproof cover cleaning
 - a. Tool – Soft Brush or Vacuum
 - b. Method – Soft Brush
 - i. Remove the dustproof mesh before cleaning – hold the electronics assembly on the base and push the clip with your index finger, pull out the dustproof cover.



NOTE: If you can not pull out the dust-proof cover – please look for the additional clip which may be locking it in place.



There are 6 dust filters – 2 are located on the left hand side of the system, 2 are located on the right hand side of the system and 2 are located at the front of the system.

- c. Use a soft brush to clean off the dust on the mesh

- d. Re-insert the dustproof cover by pushing the mesh towards the arrows direction.



- e. Method - Vacuum
 - i. Gently vacuum the exterior of the hard casing to remove dust from the filter

CAUTION : Please clean all dust proof covers of the system periodically (bi-monthly); otherwise, it may result in damage. Cleaning times can be increased when the system is used in the open air or dust dense environments.